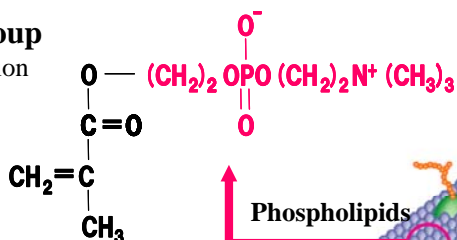


Introduction of 2-methacryloyloxyethyl phosphorylcholine.

MPC: 2-Methacryloyloxyethyl PhosphorylCholine

Phosphorylcholine group provides biocompatible biomembrane-like surface

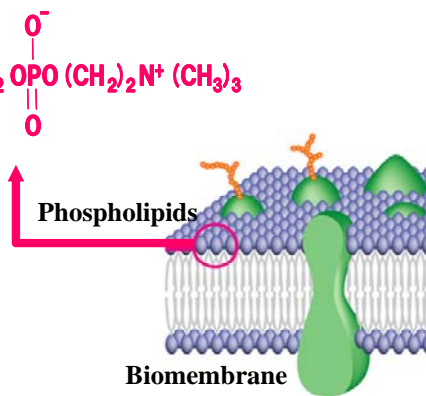
Methacryloyl group provides polymerization



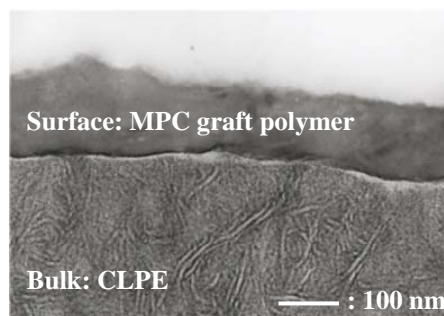
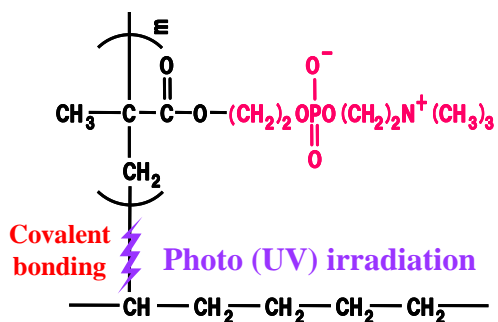
Characteristics of MPC polymer

- Well biocompatibility**
- High lubricity and low friction**
- Anti-protein adsorption
- Biomembrane-like surface
- Wide applications

Ishihara K, et al. Polym J, 1990.



Scheme and TEM image of CLPE-g-MPC prepared by using a photo-induced graft polymerization technique.



Moro T, et al. Nature Mater, 2004.