

Imaging intra-cellular polyethylene wear debris with coherent anti-Stokes Raman scattering spectroscopy

Martin Lee, Alistair Elfick

Institute for Materials and Processes,
The University of Edinburgh,
Edinburgh, UK



THE UNIVERSITY *of* EDINBURGH

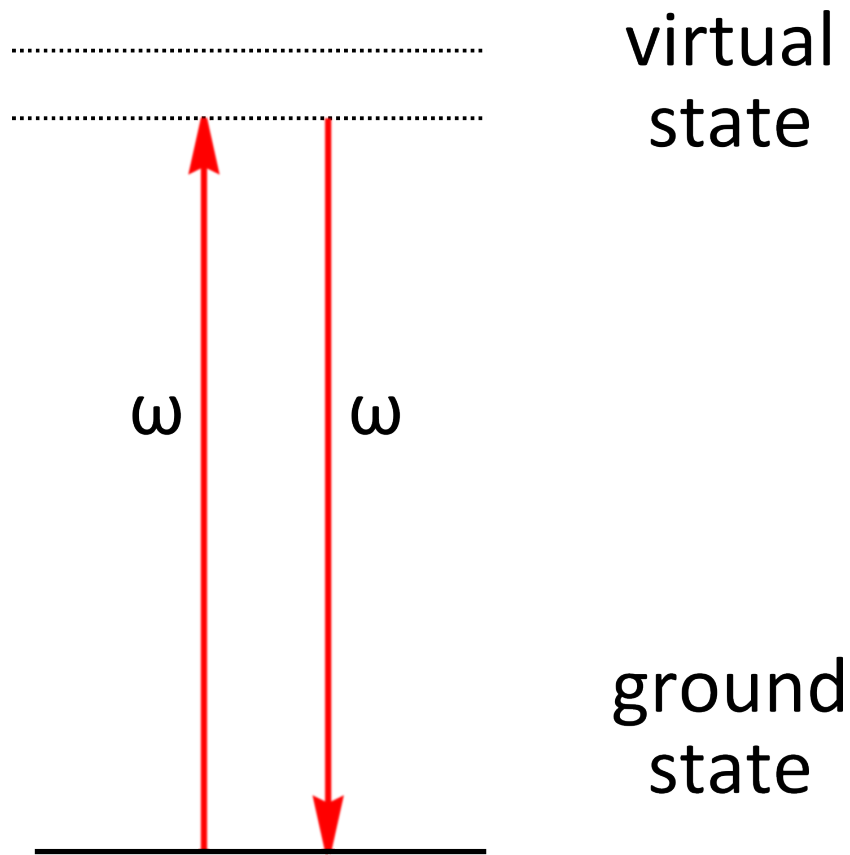
Overview

1. Introduction to Raman
2. Coherent anti-Stokes Raman scattering
3. Our CARS setup
4. Our model system
5. Results
6. Conclusion



THE UNIVERSITY *of* EDINBURGH

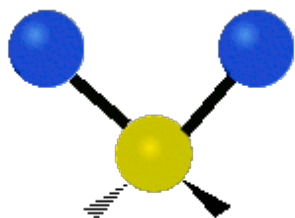
Rayleigh Scattering



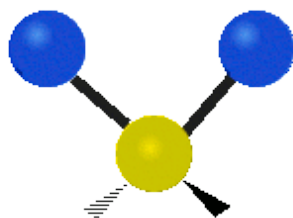
THE UNIVERSITY *of* EDINBURGH

CH₂ Vibrations

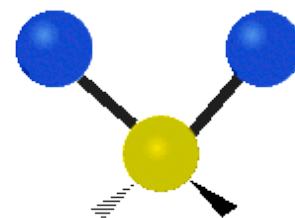
symmetric stretching



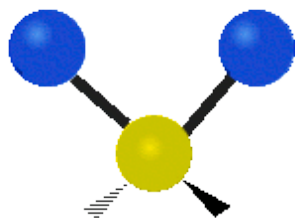
asymmetric stretching



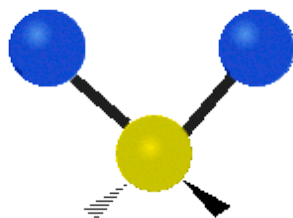
scissoring



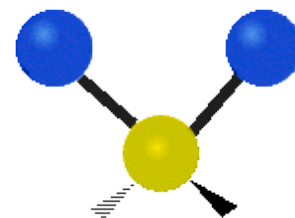
rocking



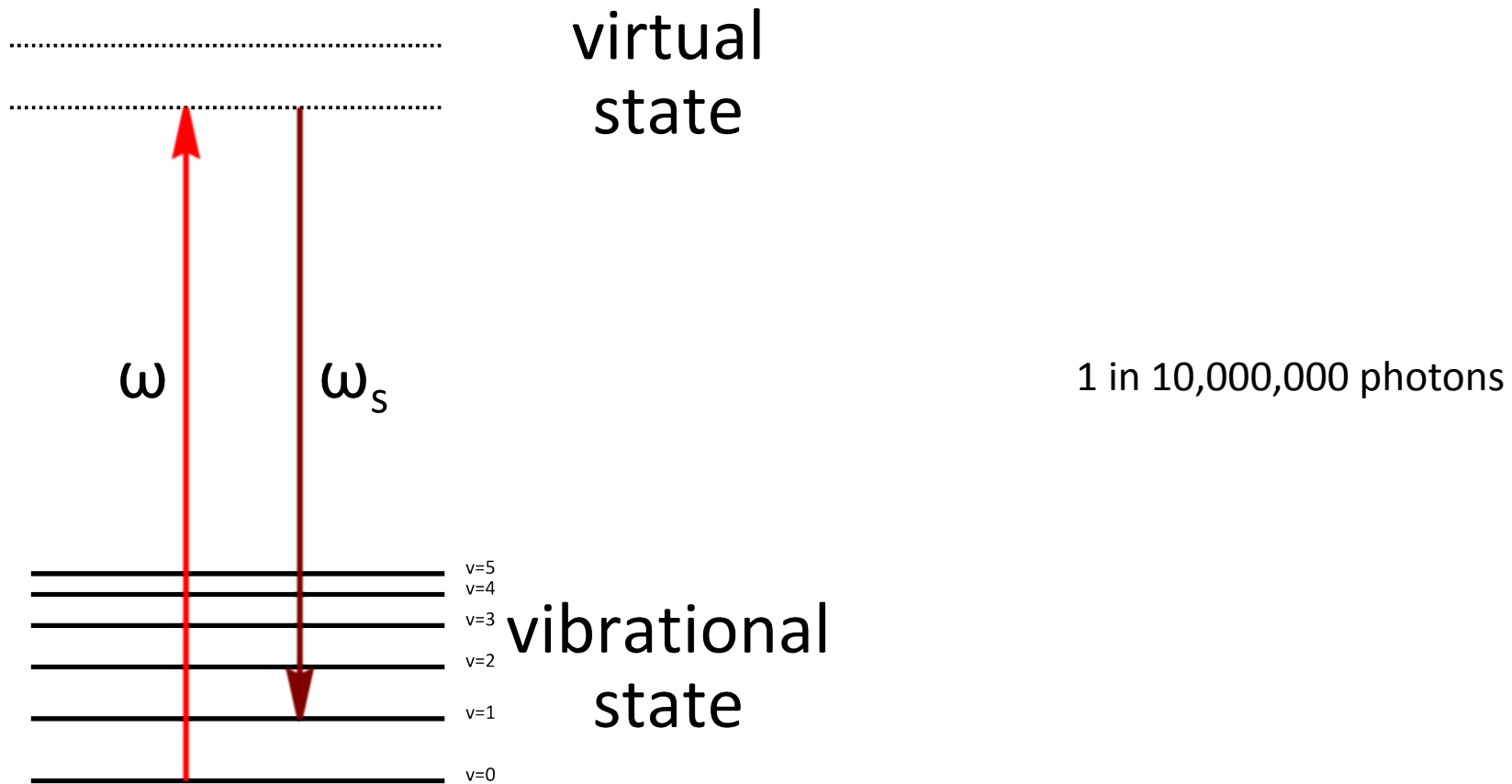
wagging



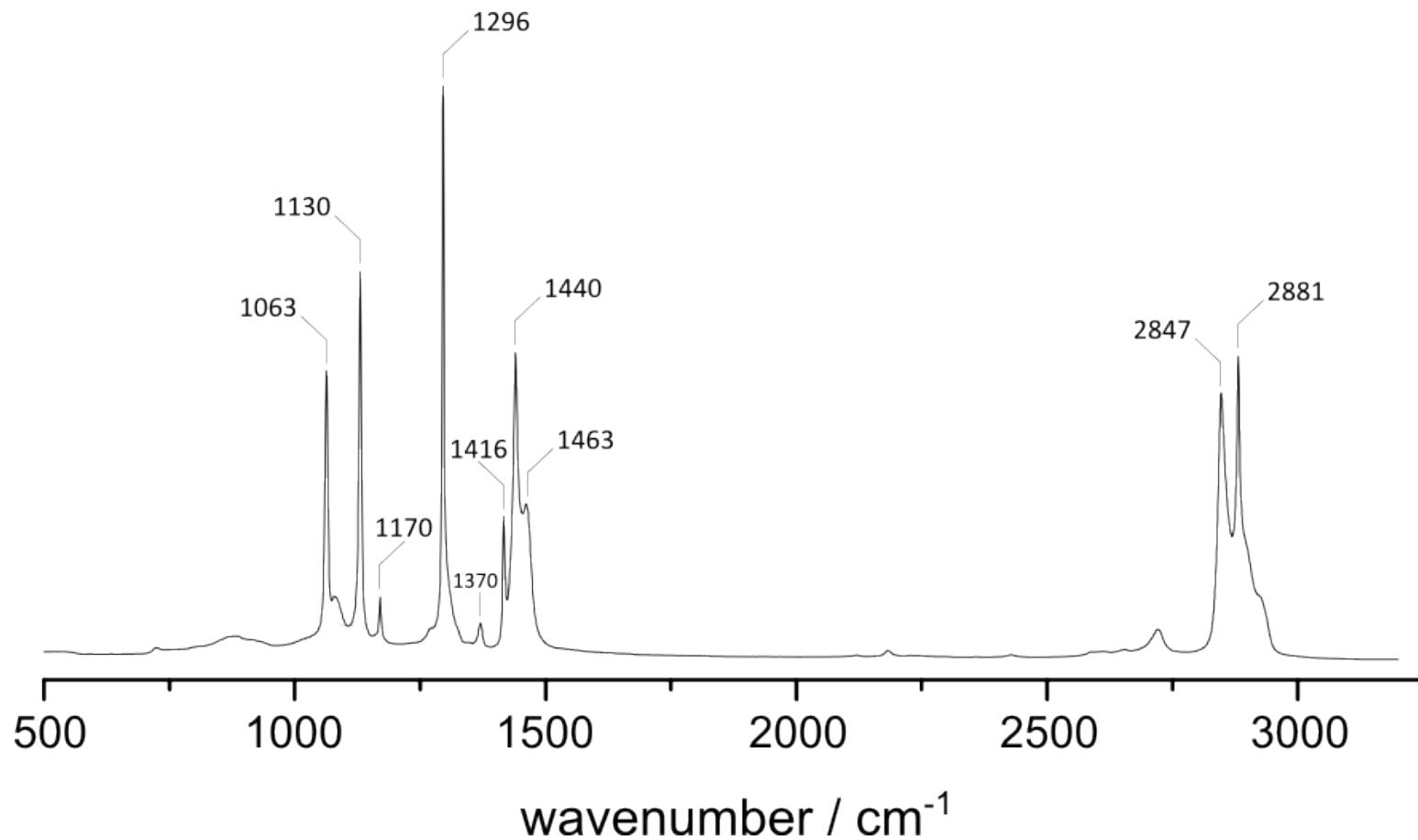
twisting



Raman Scattering

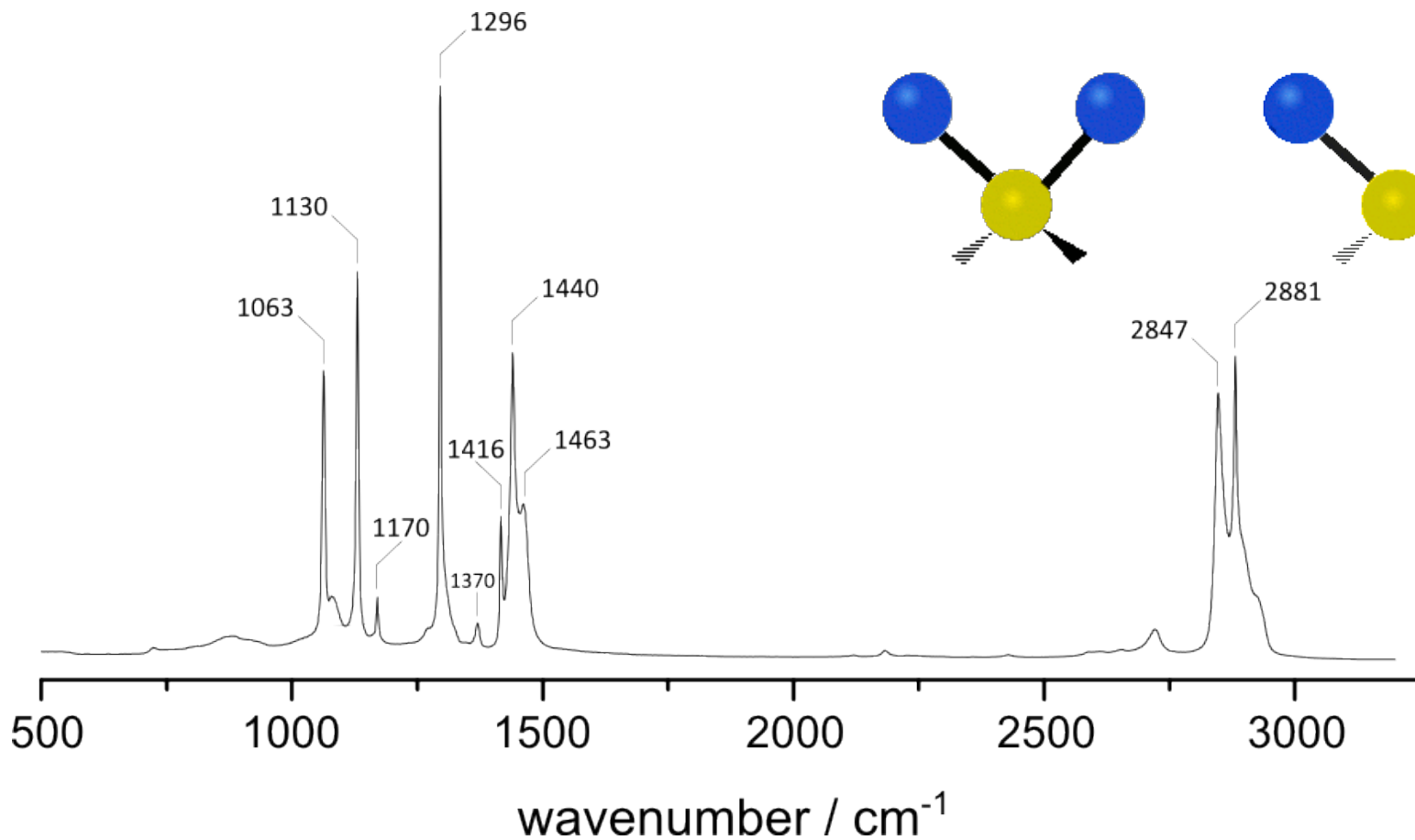


Raman Spectrum - UHMWPE



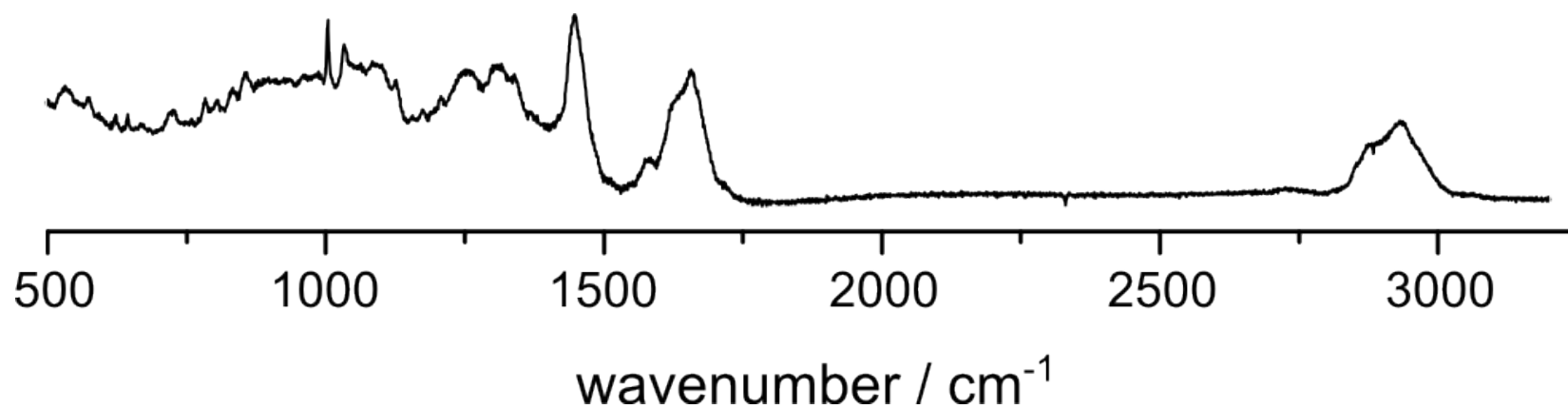
THE UNIVERSITY *of* EDINBURGH

Raman Spectrum - UHMWPE



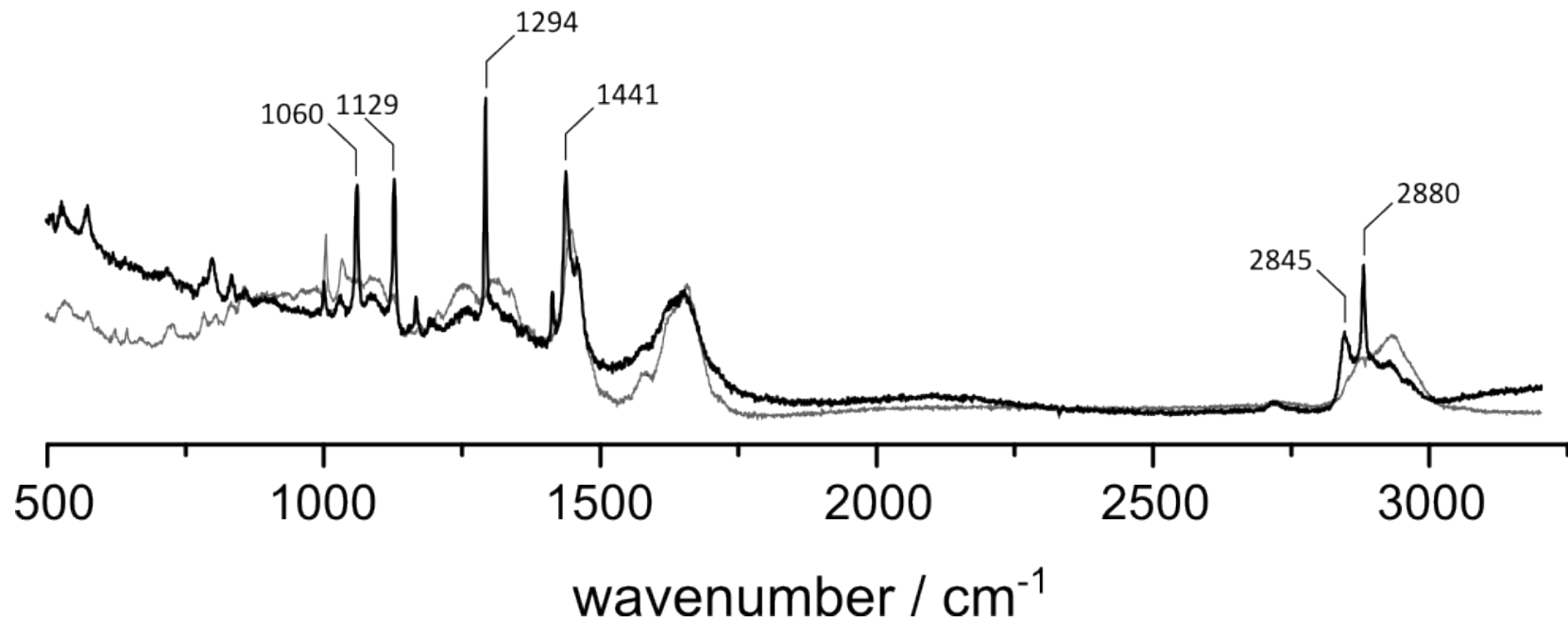
THE UNIVERSITY *of* EDINBURGH

Raman Spectrum – Cell



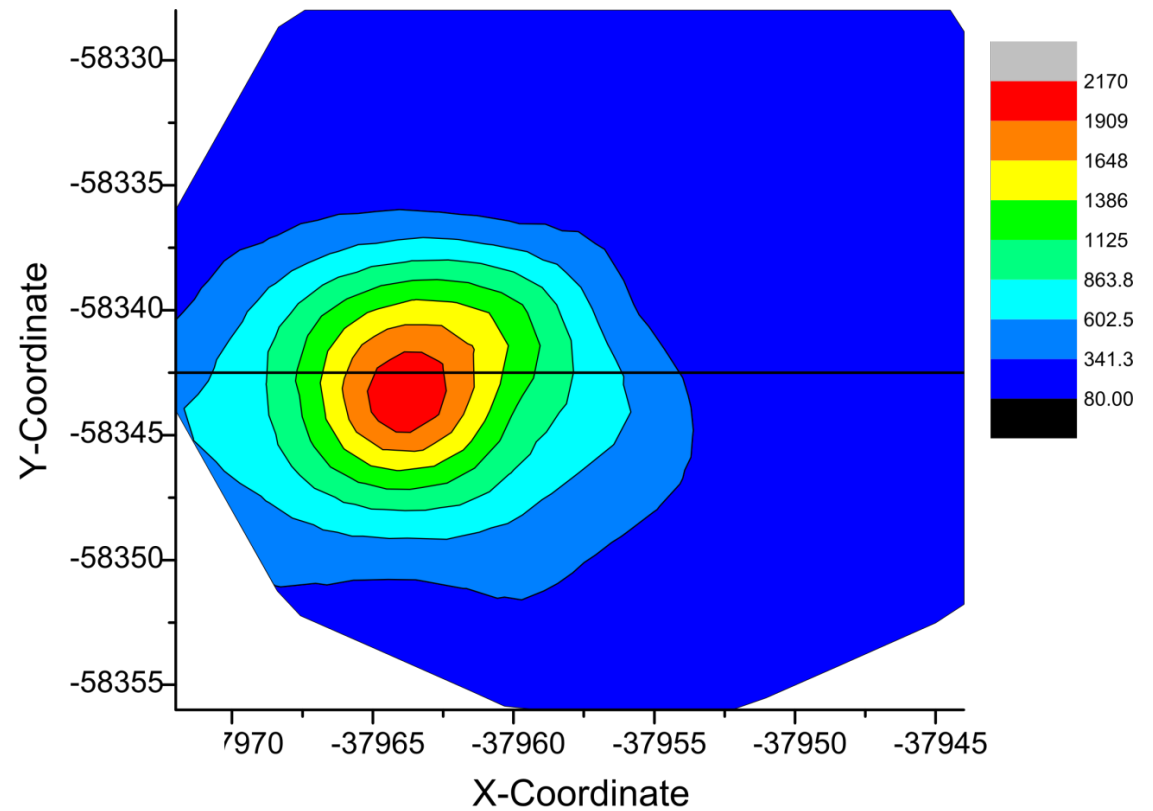
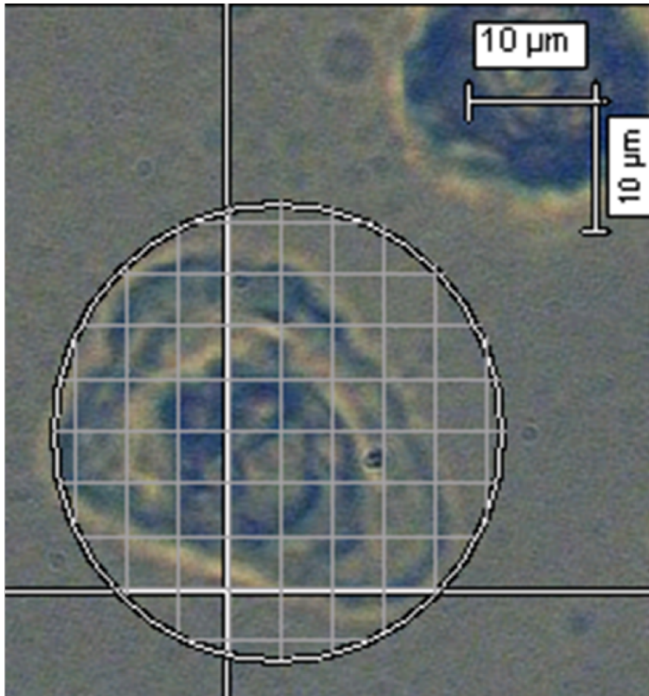
THE UNIVERSITY *of* EDINBURGH

Raman Spectrum – Cell + UHMWPE



THE UNIVERSITY *of* EDINBURGH

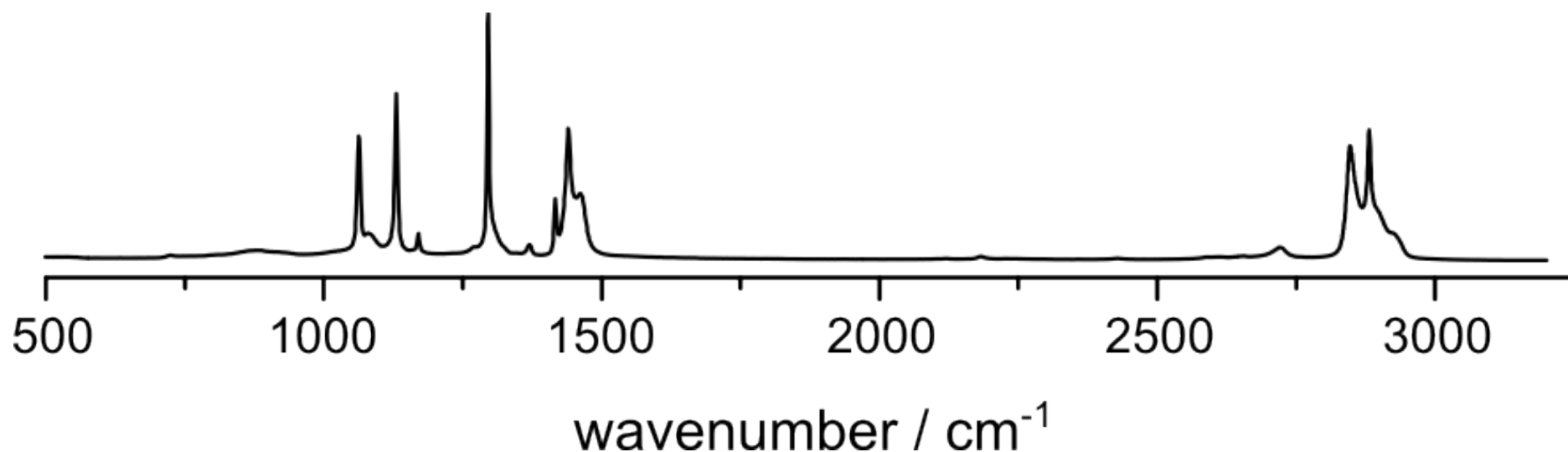
Raman Mapping



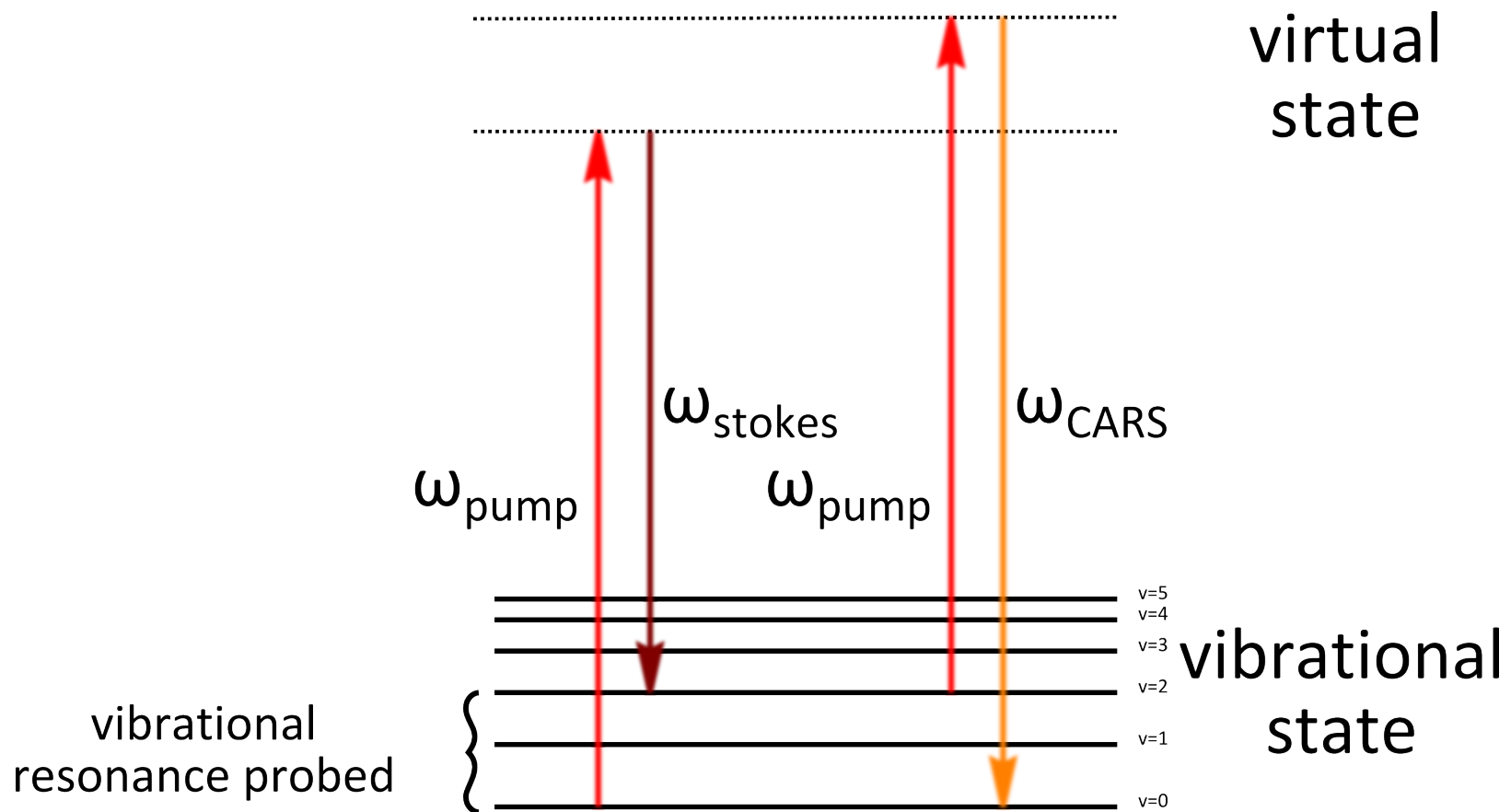
THE UNIVERSITY *of* EDINBURGH

Raman

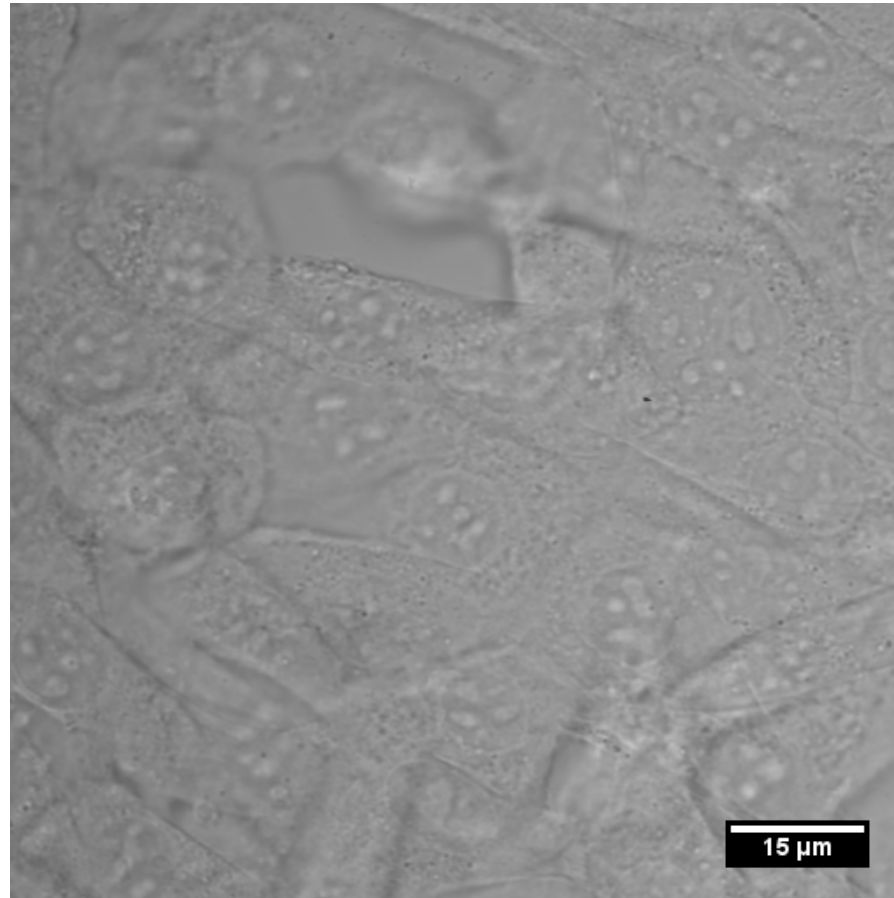
- optical method
- no label required
- wide spectrum
- slow
- low resolution
- poor 3D information



Coherent anti-Stokes Raman Scattering

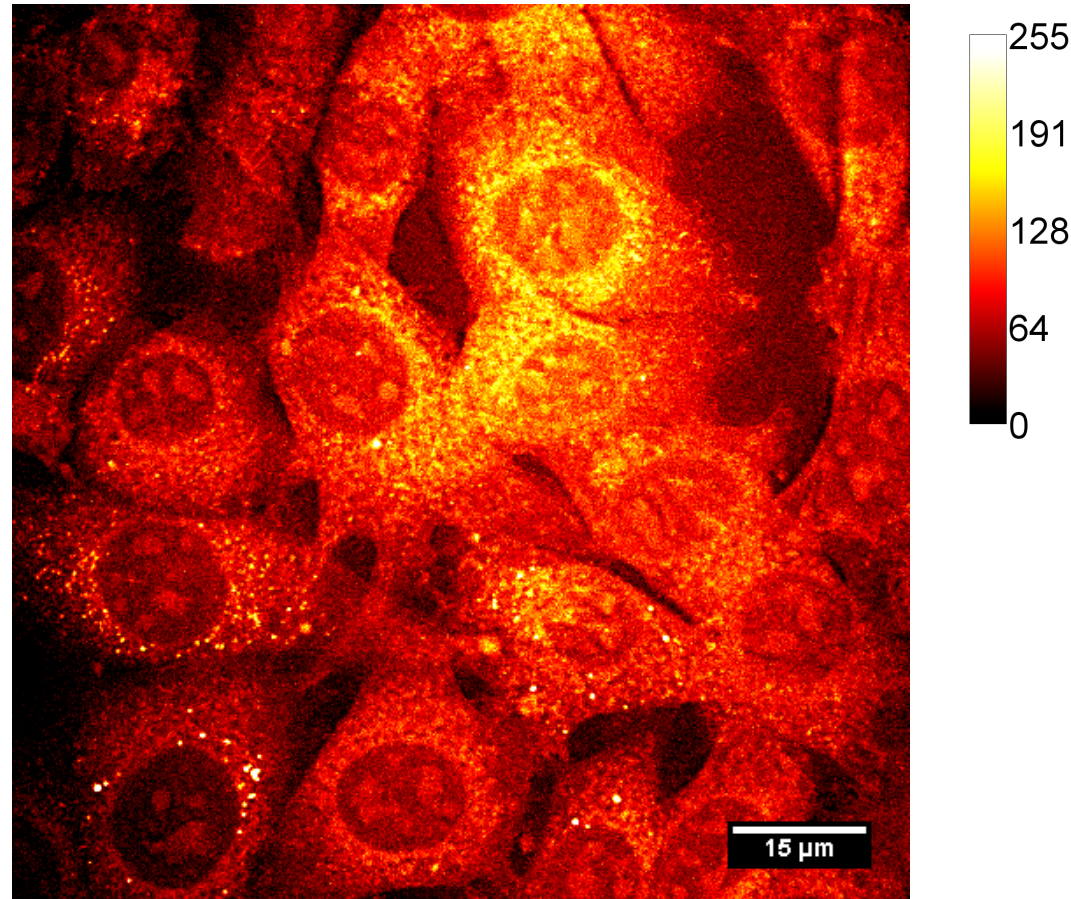


White Light – Refractive Index



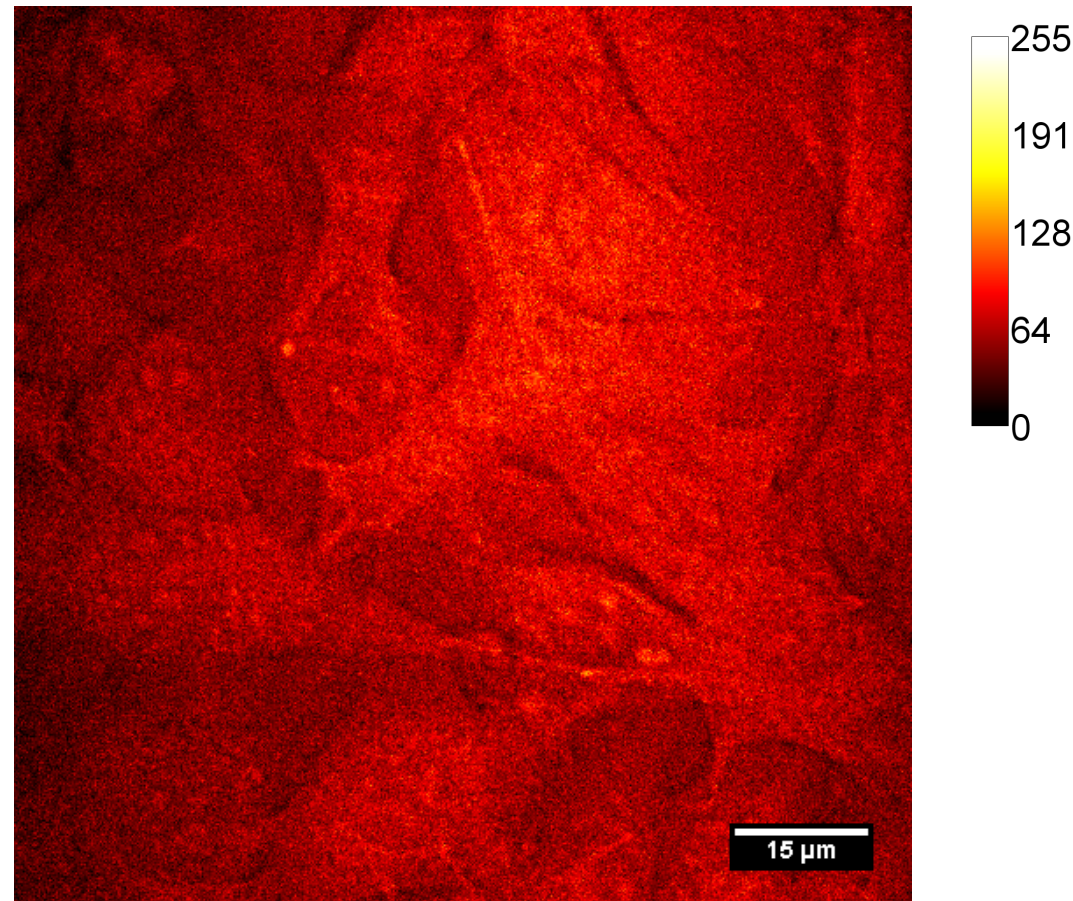
THE UNIVERSITY *of* EDINBURGH

CARS – Chemical Bonds



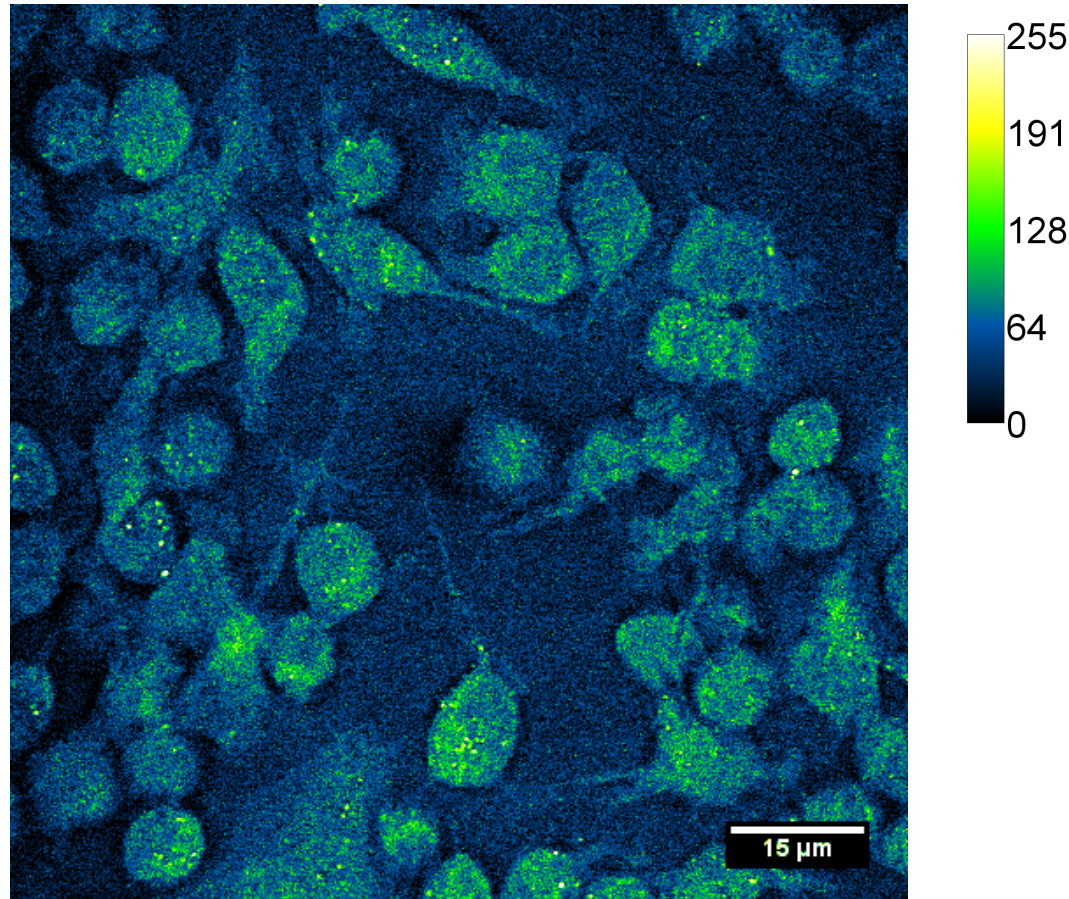
THE UNIVERSITY *of* EDINBURGH

CARS – 3D Sectioning



THE UNIVERSITY *of* EDINBURGH

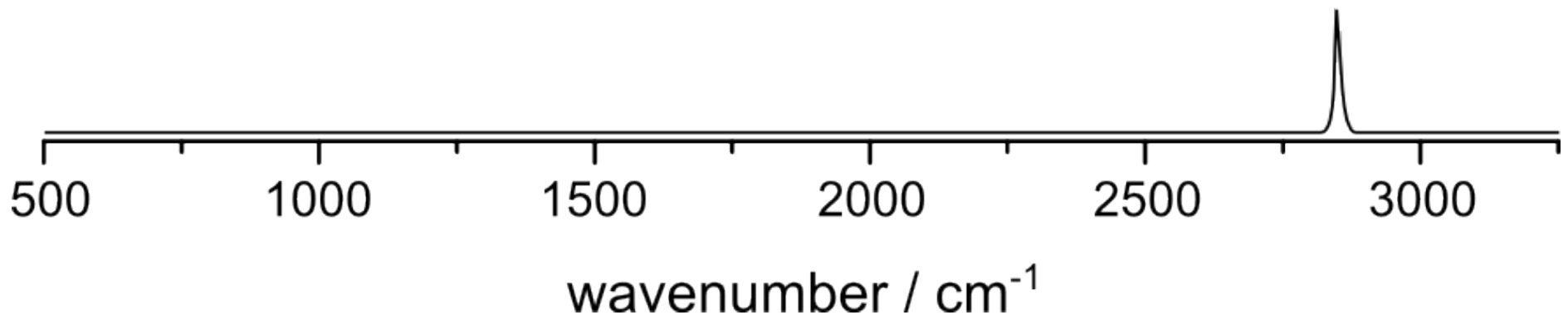
CARS – Living Cells



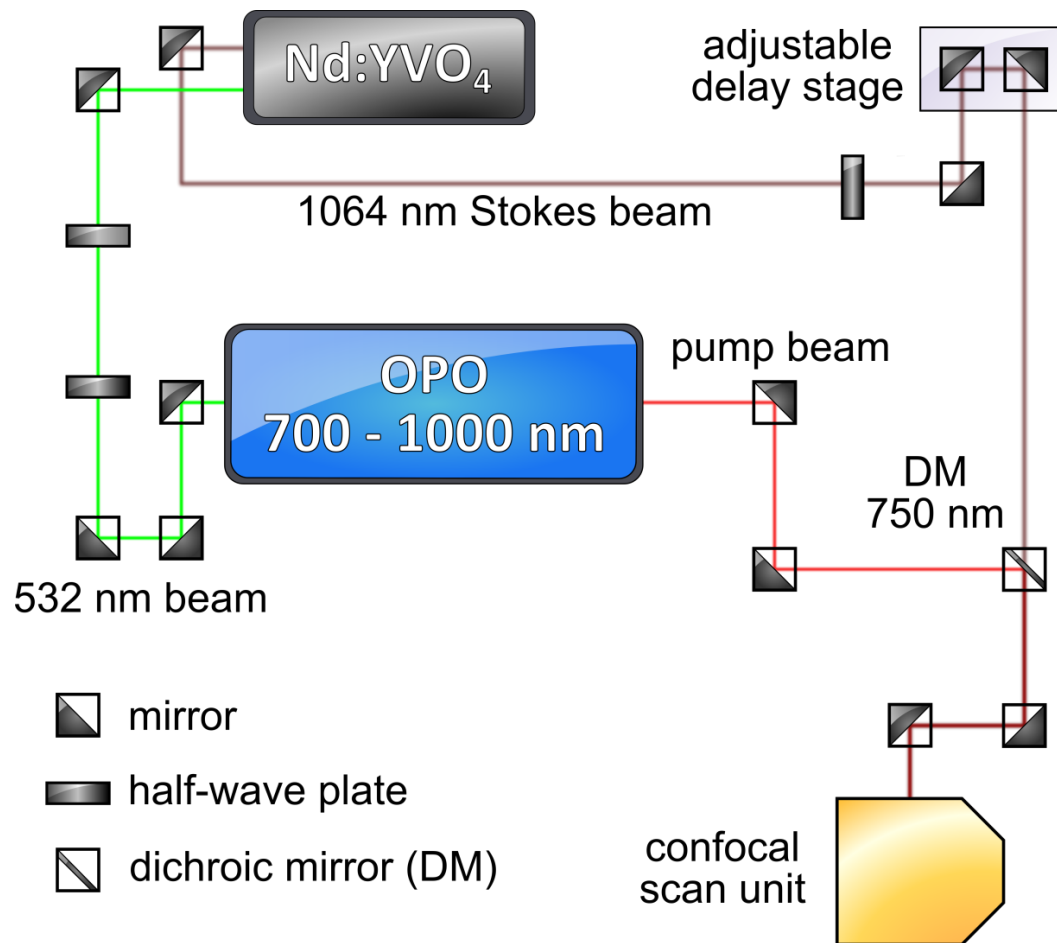
THE UNIVERSITY *of* EDINBURGH

Coherent anti-Stokes Raman

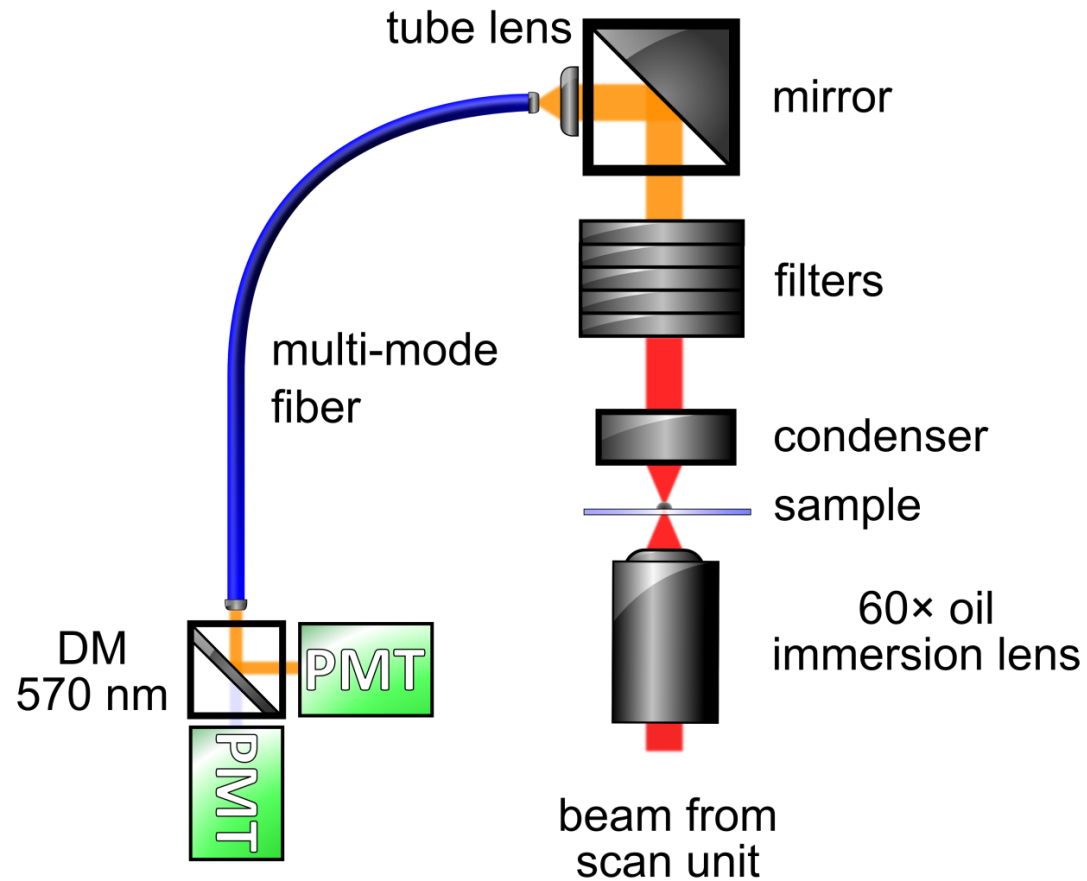
- optical method
- no label required
- narrow spectrum
- fast
- high resolution
- good 3D information



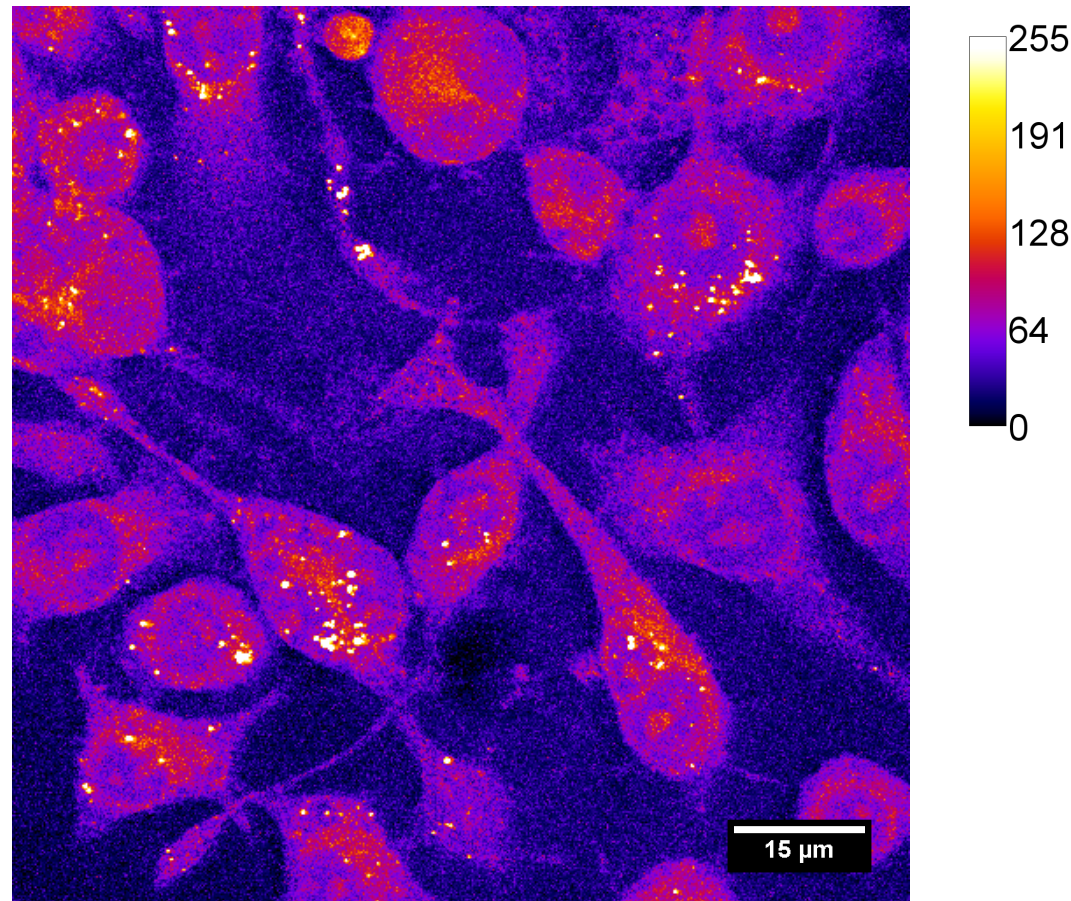
CARS – Laser Source



CARS – Microscope Setup

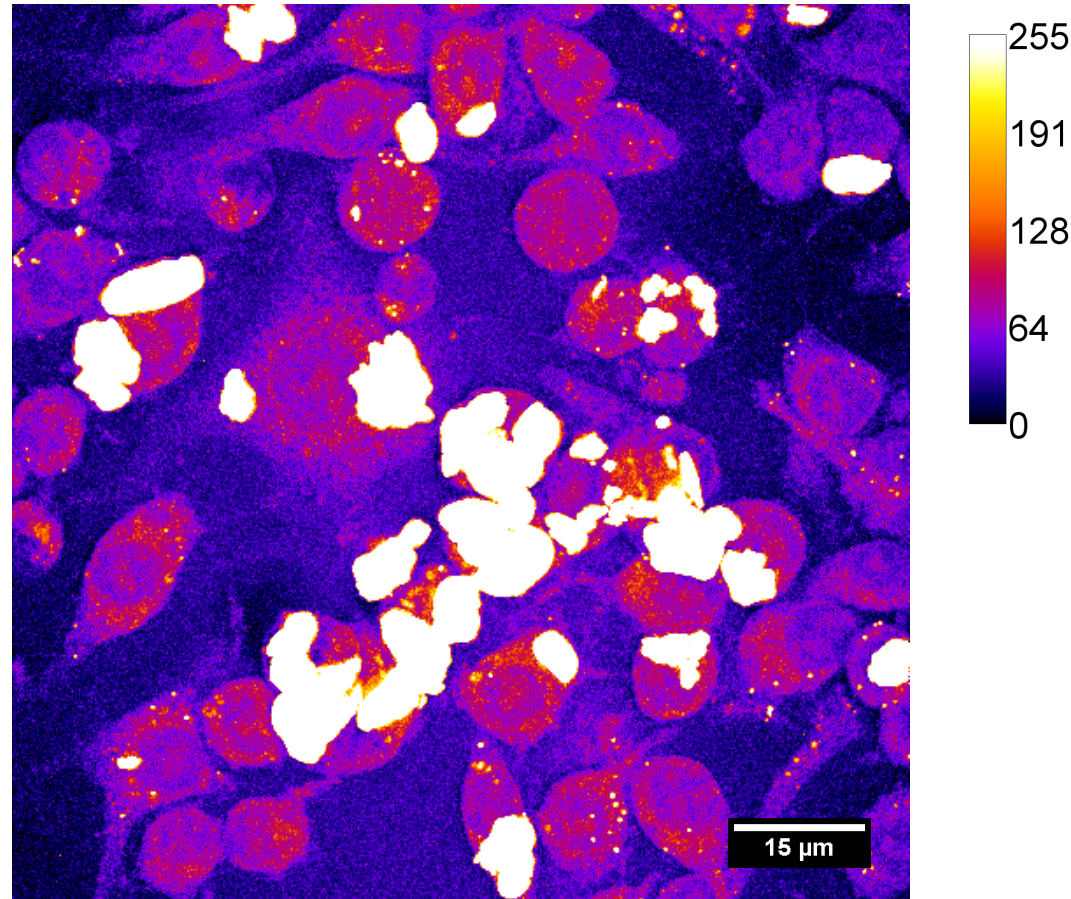


Macrophage Cells



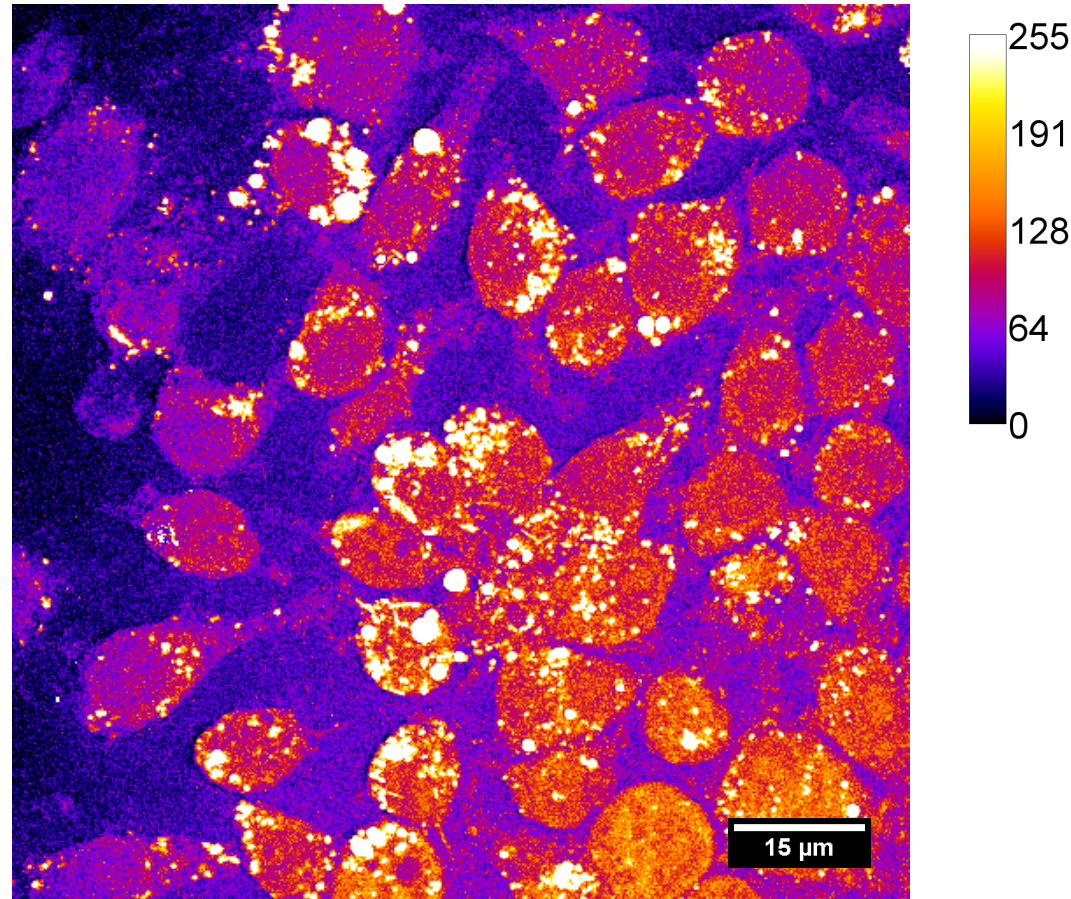
THE UNIVERSITY *of* EDINBURGH

Micronised Polyethylene



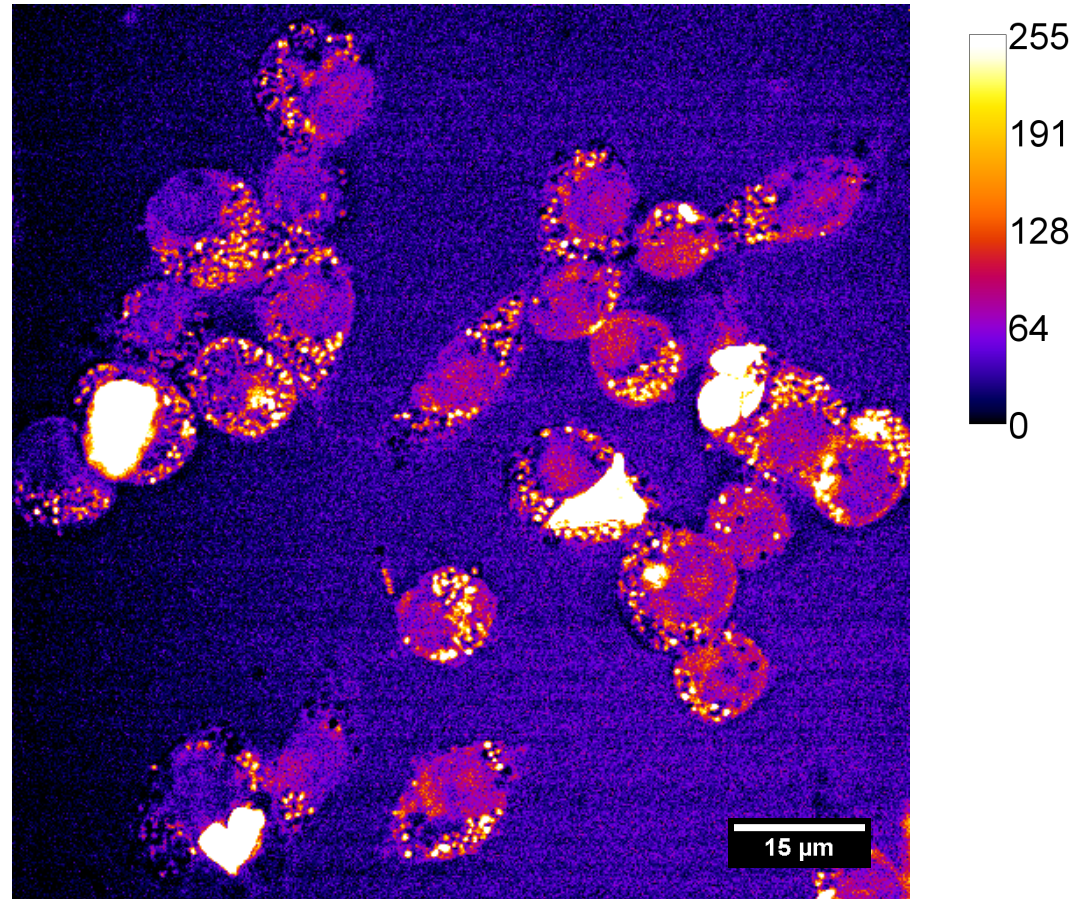
THE UNIVERSITY *of* EDINBURGH

Wear Simulator Debris



THE UNIVERSITY *of* EDINBURGH

Enhancing Contrast



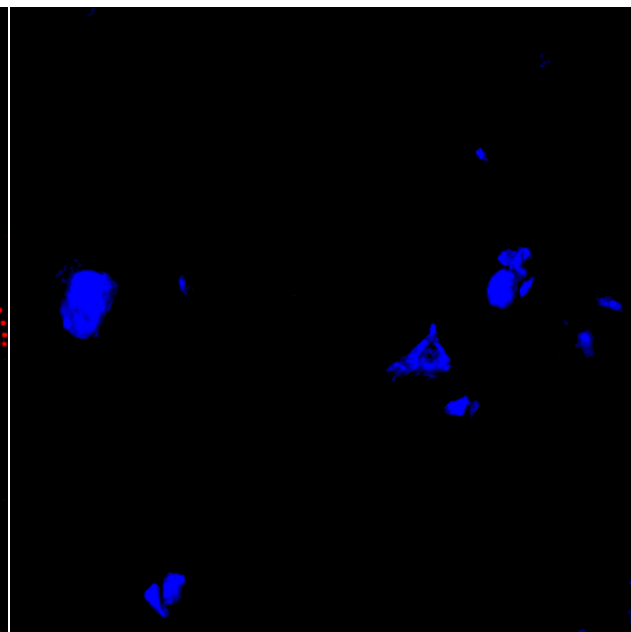
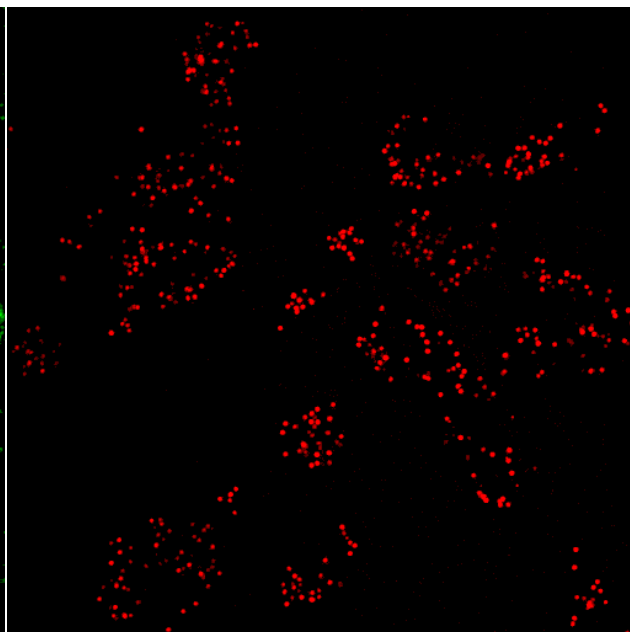
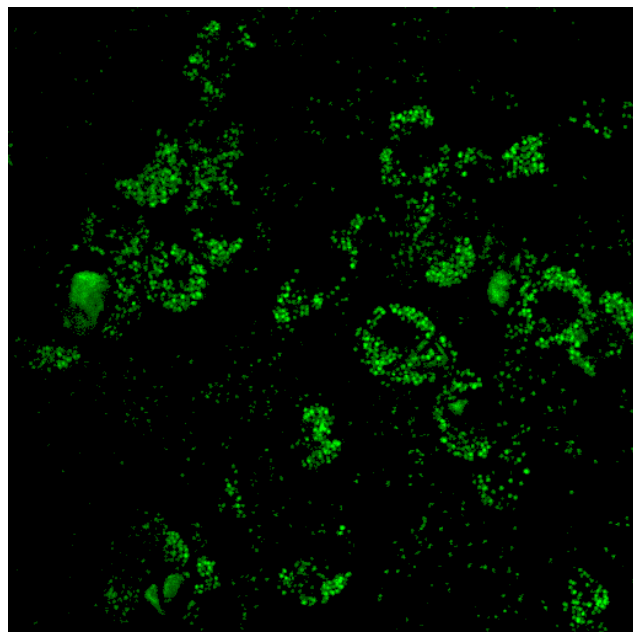
THE UNIVERSITY *of* EDINBURGH

Enhancing Contrast

PMMA

Polystyrene

Polyethylene



2950 cm^{-1}

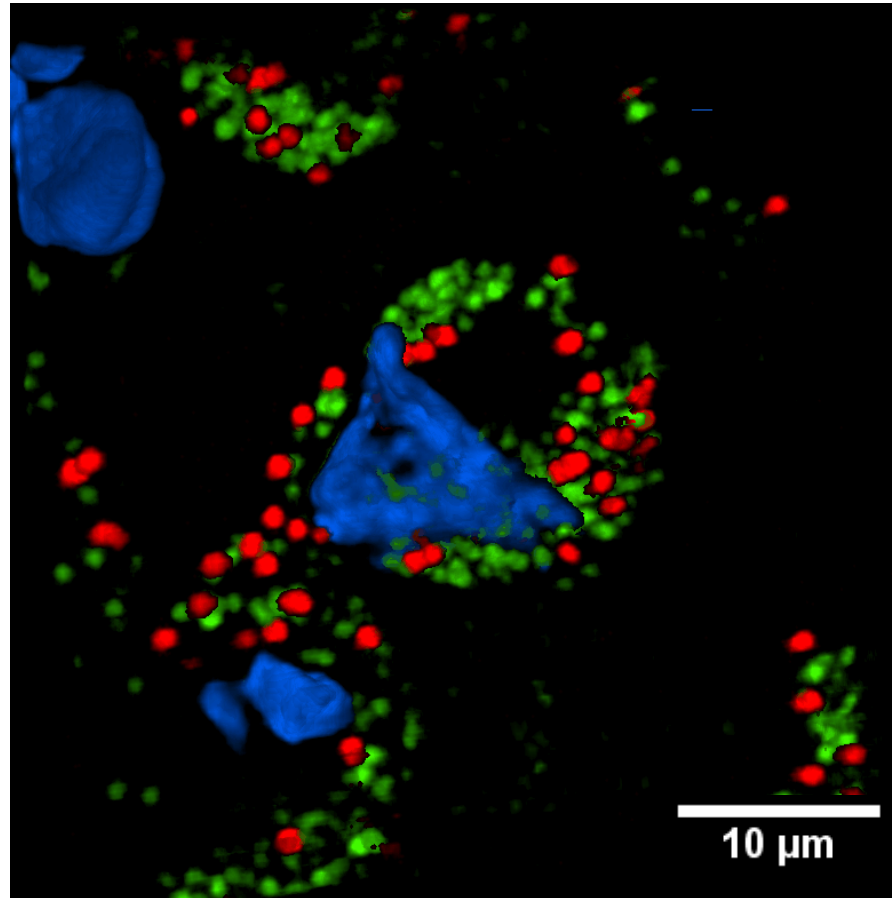
3060 cm^{-1}

2850 cm^{-1}



THE UNIVERSITY *of* EDINBURGH

3D Imaging



THE UNIVERSITY *of* EDINBURGH

Conclusions

- label free imaging of polyethylene and more
- fast image acquisition on live cells
- good spatial resolution

- improve chemical identity
- work on tissues



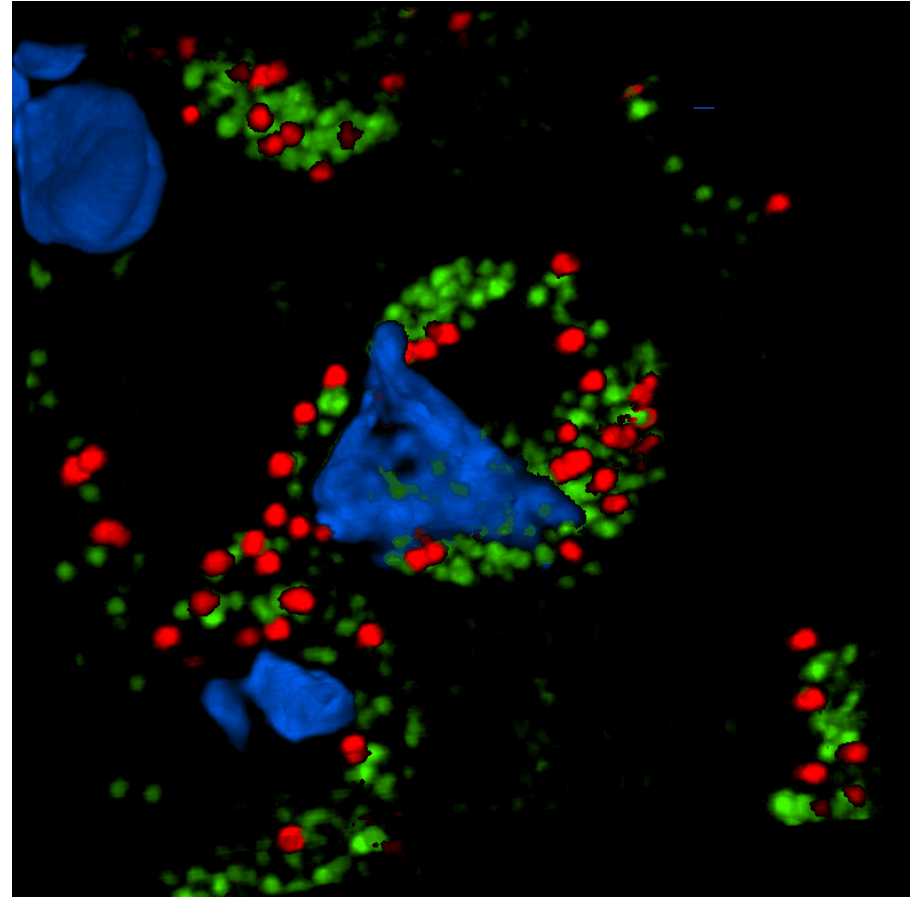
Thanks

EPSRC

Engineering and Physical Sciences
Research Council

Dr. Alistair Elfick
Vlastimil Srsen

martin.lee@ed.ac.uk
alistair.elfick@ed.ac.uk



THE UNIVERSITY *of* EDINBURGH